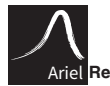


S390M10CB S395M10CB S400M10CB

Shinson is a leading professional supplier in the renewable energy industry, specializing in the production and distribution of high-quality PV modules, completed PV kits, and energy storage solutions. With a commitment to sustainable energy solutions, we strive to provide innovative and reliable products to meet the growing global demand for clean and efficient power generation.

With a focus on quality, innovation, and customer satisfaction, we strive to empower individuals, businesses, and communities with reliable and sustainable energy solutions. By harnessing the power of the sun and embracing renewable energy, we are driving the transition towards a greener and more sustainable future.

S-Nano™ series of PV modules are designed for residential and small commercial installations with compact sizes and aesthetic appearances.



Roofing Aesthetics with multiple colours

S-Nano™ series has been designed with aesthetic in mind, the multiple colourful glasses looks well integrated to roof tiles or building ,creates on modern and improved aesthetic.



High efficiency Topcon Cells

Built with highest efficiency of TOPcon solar cells to ensure the output are similar with regular colour modules.



Longer life span with 25 years warranty

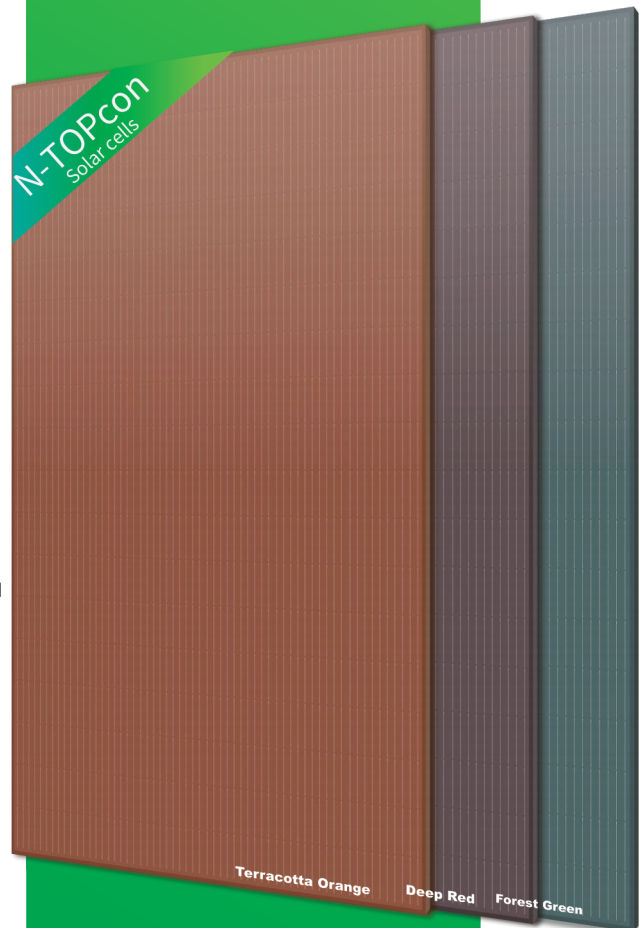
Built with high reliable raw-materials, shinson extended the warranty period up to 25 years for both performance and workmanship which is on top level of the industry for backsheet modules.



Lower power degradation with more generation

Ensured PID resistance through cell process and module material control to help harvest more, guaranteed only 0.4% annual power degradation .

S.NANO[™]
Solar Modules
TOPcon / Colorful



Electrical Data (STC)

Part Number	S390M10CB	S395M10CB	S400M10CB
Maximum Power- Pmax(W)	390	395	400
Open Circuit Voltage - Voc(V)	35.86	36.07	36.28
Short-Circuit Current - Isc(A)	13.65	13.76	13.87
Voltage at Pmax -Vmp(V)	30.86	31.03	31.2
Current at Pmax - Imp(A)	12.64	12.73	12.82
Module Efficiency -ηm(%)	19.50	19.80	20.00
Power Tolerance(W)		(0, +4.99W)	
Maximum System Voltage(V)		1500Vdc (IEC/UL)	
Maximum Series Fuse Rating (A)		25A	

*STC : Irradiance 1000W/m², Cell Temperature 25 °C, Air Mass 1.5

*Measurement tolerance: ±3% *Power binning up to: +3%

Mechanical Specifications

External Dimensions	1762x1134x30mm
Weight	21.5kg
Solar Cells	N-Type 16BB 182x105mm (2x48pcs)
Front Glass	AR Coated 3.2 mm tempered glass
Frame	Anodized aluminum alloy
Junction Box	IP68
Output Cables	4.0mm², 1200mm (+),1200mm (-), length can be customized
Connector	MC4 Compatible
Mechanical Load	Front Side Max. 5400Pa, Rear Side Max. 2400Pa

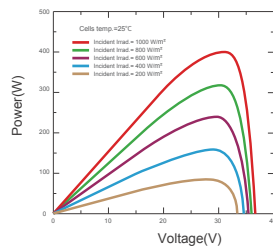
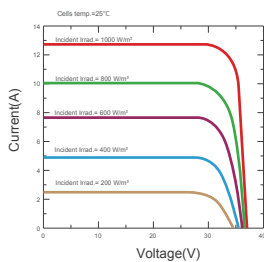
Packing Configuration

Pallet Dimensions	1790x1140x1254mm		
Ways of Transport	40'HQ	13.5m Flatbed Truck	17.5m Flatbed Truck
Pieces per Pallet	37 Pcs	36 Pcs	36 Pcs
Pallets per Container	26 Pallets	24 Pallets	36 Pallets
Pieces per Container	962 Pcs	864 Pcs	1296 Pcs

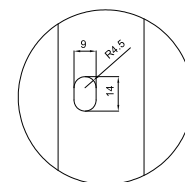
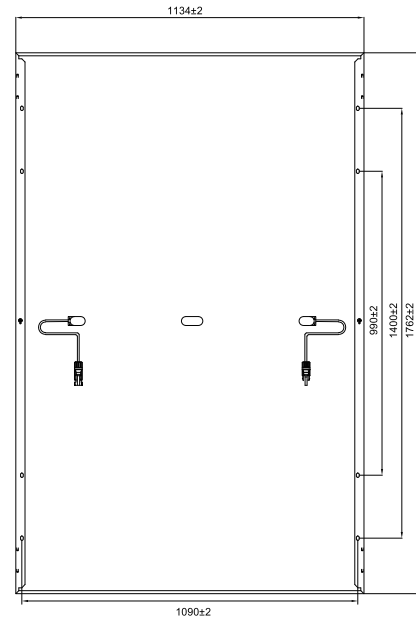
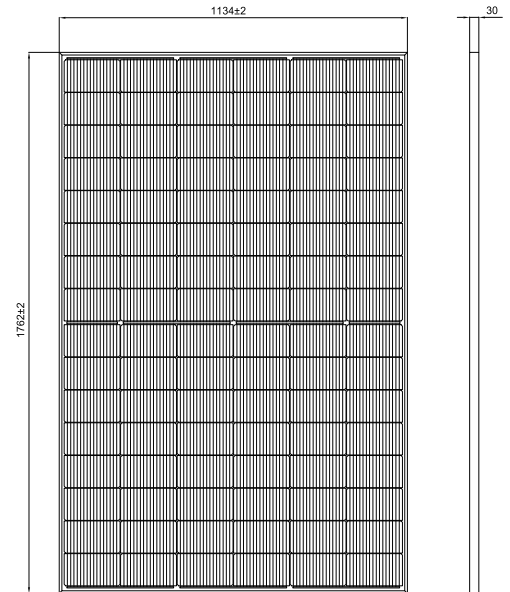
Temperature Characteristics

Pmax Temperature Coefficient	-0.290%/°C
Voc Temperature Coefficient	-0.250%/°C
Isc Temperature Coefficient	+0.045%/C
Operating Temperature Range	-40~+85C
Nominal Operating Cell Temperature	45+2C

Current-Voltage & Power-Voltage Curves (SKT400M10)



Dimensions of PV Module(mm)



Unit: mm

